



Wheaton Aston Court

A modern and inviting care home
in the heart of Staffordshire

brighterkind





Welcome to Wheaton Aston Court.

We're here to make life easier, more settled and altogether better.

brighterkind is our approach to care. It focuses on understanding what quality of life means for everyone here, and then provides the right experiences to help our residents live their lives to the fullest. These experiences are built from our specialist approach to quality care, recreation and activities, and food and dining.

By taking the time to understand you, we will provide the informed care that turns a move to our home into a welcome change for the better.



Our home

A real home has as much personality as the people that fill it. That's why we've made Wheaton Aston Court a place you'd be proud and happy to live in – just as you would your own home.

Surrounded by Staffordshire's scenic countryside, just off the A5 between Redhill and Gailey, Wheaton Aston Court is a warm and inviting one-level residence. All of our 31 bedrooms are suitable for those requiring residential or nursing care.

All our facilities are set across one floor, making everything extremely accessible. There are two lounges and a large dining room, meaning peace and quiet is never far away. All furnishings and decor throughout the home are of an exceptionally high standard. We also have French windows leading to a patio area, perfect for outdoor socialising, and a large lawn, shrubbery area, and raised beds.

We understand that moving into Wheaton Aston Court will be a considerable transition, but one we try to make feel as easy as possible. By helping you arrange your room just the way you like, or bringing you your daily newspaper, we'll do the little things that make the biggest difference.

OUR FACILITIES

- All single rooms with en-suite
- Countryside or garden views
- Flat-screen TVs in lounge rooms
- Assisted bathrooms and shower room
- Two lounges and dining room
- Hairdressing salon
- Wi-Fi internet
- Large garden with raised beds
- Patio area



““““

Wheaton Aston Court really looks cared for and has a warm, friendly, and inviting atmosphere with happy staff and residents.



Quality care

We want every day at Wheaton Aston Court to be as good as it can be. It's why we deliver brighterkind care, based around a complete understanding of each resident's needs. This means we'll create the right environment to keep you well and happy. You'll decide how you want to live; we'll make sure you always feel valued and comfortable.

All of our rooms are suitable for those requiring nursing care. Our care is first rate: we provide the most up-to-date training for our carers, and support for our residents.

How will I know what type of care is right for me?

When you arrive at Wheaton Aston Court, we'll sit down together to understand you, your life story and your needs. This includes any objectives you have, or specific health concerns. We'll then create a personal care plan together with you, your relatives and our carers.

Our people

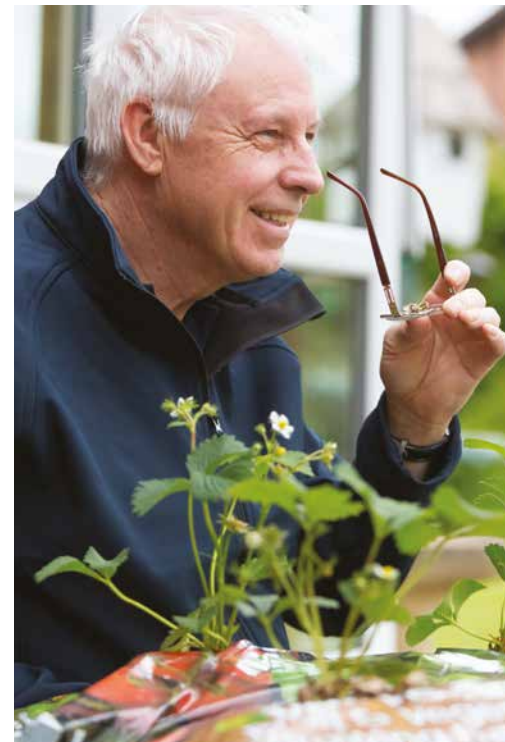
We're a diverse group, from different backgrounds and with different roles, but we all have something fundamental in common – every single one of us is passionate about care.

It's almost like a sixth sense: people who are always on hand to help, but with enough empathy to know when to leave you be; people who don't have favourites, and who are always busy creating the little moments of kindness that make a real difference to life here.

As well as our team of carers and nurses, a GP visits the home weekly and is on call to provide services, should they be needed at any time. We also have weekly visits from a hairdresser should residents want a little pampering. And everyone gets stuck in together – whether to serve breakfast or perform at our music nights.

“”

All the staff here are working towards the same goal – enhancing the residents' quality of life.



Our recreation and activities

A willingness to get involved and try new things is something we see time and again, once people are given the opportunity. We have a specific recreation and activities coordinator who oversees everything, but all our staff regularly brainstorm new ideas, too. And our residents vote on their suggestions at our monthly activity meetings, so we can be sure everyone's looking forward to something, every day.

Activities vary each week: from quizzes and pampering sessions to card games and arts and crafts. And everything's flexible. If it's sunny we try and get outside, so everyone can appreciate the best of the day.

Technology has opened up the world for us here; keeping our residents connected and stimulated. There is Wi-Fi throughout the home and a number of residents have their own tablets and iPads to communicate with family, send emails, and play games.

We use a community bus service to take trips further afield to canal barges, garden centres, church flower shows and to see the Chasewater Railway.

6699

Residents love to walk in the garden, but we also offer armchair aerobics, group ball games, and do a lot of gardening in the summer to help everyone stay active.



6699

We often make a trip to the local garden centre for their excellent carvery.



Our food and drink

At Wheaton Aston Court, we love our food. We firmly believe that when you eat well, you live well too. This is a core part of our brighterkind philosophy of care, centring on good nutrition and the importance of mealtimes as a social occasion.

Each day we serve restaurant-style meals combining variety with a balanced diet and an emphasis on locally sourced ingredients. And we can cater to any dietary or health requirements, however complex.

There is one dining room where all the residents come together – it's a space that always become a hub of conversation and laughter, and which gives even our more frail residents a chance to come together and socialise. Whether it's tea and cakes in the garden or a roast each Sunday, we encourage our residents to make the most of living in a friendly environment. There will be plenty of people to meet, and a lot of stories to share.

Of course, when, where and who you eat with is entirely up to you. Friends and family can join you as often as you'd like (at a small charge), and our extras menu gives you the option to order snacks at any time of the day.

Here are some of the most popular questions people ask us as we show them round Wheaton Aston Court:

Will I be able to bring my pet?

Unfortunately we are unable to accommodate pets within the home. We do, however, encourage visitors and relatives to bring pets to visit residents.

Can I come and go as I please?

We want you to be as independent as you like. So this is something we'll chat about when we sit down together to draw up your care plan.

When can people come and see me?

It goes without saying that we want your friends and relatives to visit, so they can come as often as they like on any day. No appointment is necessary.

What will there be to do during the day?

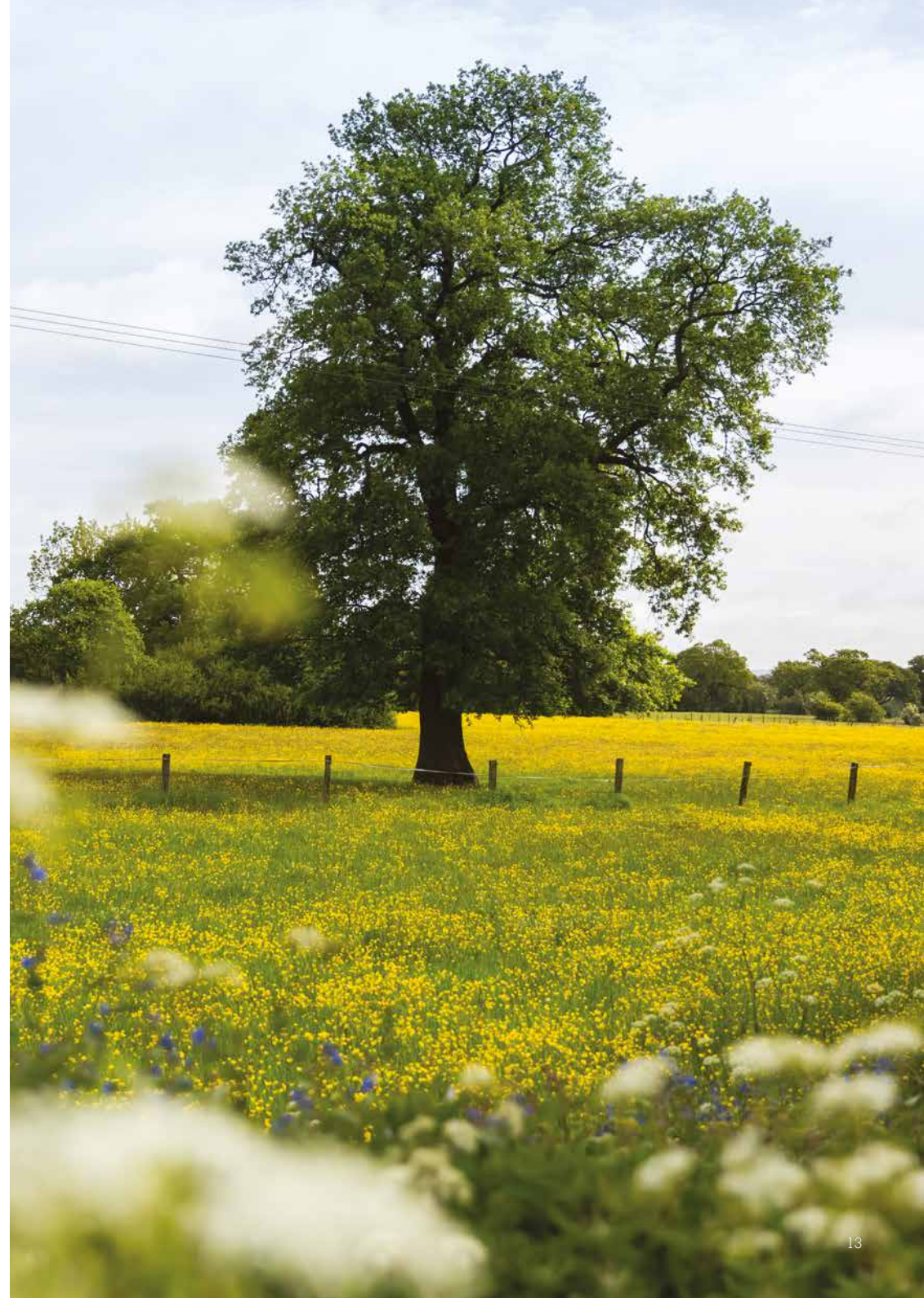
That is completely up to you. Every day we have different activities, but you should spend your time exactly how you please. There's more about the type of things we do in the Recreation and Activities part of this brochure.

How easy will it be to settle in?

It's completely natural to feel anxious about a big move. We encourage you to come along for a pre-stay visit so you can take part in an activity, meet other residents and have a meal. If you move in you can bring personal items and furniture with you to make you feel more at home in your room.

Please note: This document is available in large print, Braille and other languages if you require. Please contact us to request a copy.

This Care Home is registered and regulated by the Care Quality Commission.





To find out more or to arrange a visit please ask for our Home Manager.

Wheaton Aston Court Care Home
Ivetsey Bank, Wheaton Aston, Stafford ST19 9QT
Tel: 01785 840 423
wheatonastoncourt@brighterkind.com
www.brighterkind.com/wheatonastoncourt

